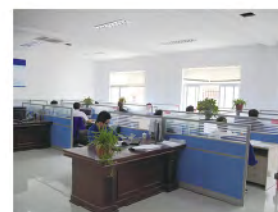




# PRODUCTION PROCESS

生产  
流程



**01**  
生产设计  
Production design

**02**  
预处理  
Shop primer



**03**  
船体加工  
Hull construction



**04**  
分段涂装  
Block Painting



**05**  
预舾装总组  
Pre-erection



**06**  
船坞搭载  
Erection in the drydock



**07**  
码头舾装  
outfitting



**08**  
交船  
Ship delivery



生产设备

# PRODUCTION FACILITIES



数控下料  
NC cutting machine



1000T油压机  
1000T hydraulic machine



12.5m三辊卷板机  
12.5m three-roller plate bender



400T 肋骨冷弯机  
400T frame bending machine



320T平板车  
320T Flat-bed Truck

产品  
介绍

# PRODUCT INTRODUCTION

产品介绍  
Product Introduction



## BULK CARRIER

### 散货船

#### 73500吨散货船 73500DWT Bulk Carrier

总长: 224.90m	Length O.A.: 224.90m
型宽: 32.25m	Breadth MLD.: 32.25m
型深: 19.70m	Depth MLD.: 19.70m
设计吃水: 12.40m	Designed Draft: 12.40m
主机: B&W 5S60MC-C	Main Engine: B&W 5S60MC-C
航速: 14.5节	Service Speed: 14.5knots



#### 64000吨散货船 64000DWT Bulk Carrier

总长: 199.90m	Length O.A.: 199.90m
型宽: 32.26m	Breadth MLD.: 32.26m
型深: 18.50m	Depth MLD.: 18.50m
设计吃水: 11.30m	Designed Draft: 11.30m
主机: B&W 5S60ME-C8.2	Main Engine: B&W 5S60ME-C8.2
航速: 14.4节	Service Speed: 14.4knots



#### 38000吨散货船 38000DWT Bulk Carrier

总长: 180.00m	Length O.A.: 180.00m
型宽: 32.00m	Breadth MLD.: 32.00m
型深: 15.00m	Depth MLD.: 15.00m
设计吃水: 9.50m	Designed Draft: 9.50m
主机: 5S50ME-B9.3	Main Engine: 5S50ME-B9.3
航速: 14.0节	Service Speed: 14.0knots



#### 15000吨散货船 15000DWT Bulk Carrier

总长: 149.80m	Length O.A.: 149.80m
型宽: 22.30m	Breadth MLD.: 22.30m
型深: 10.50m	Depth MLD.: 10.50m
设计吃水: 7.55m	Designed Draft: 7.55m
主机: MAN 8L32/40	Main Engine: MAN 8L32/40
航速: 12.8节	Service Speed: 12.8knots



#### 9800吨散货船 9800DWT Bulk Carrier

总长: 109.80m	Length O.A.: 109.80m
型宽: 26.80m	Breadth MLD.: 26.80m
型深: 6.85m	Depth MLD.: 6.85m
设计吃水: 4.20m	Designing Draft: 4.20m
主机: LC6250ZLC-7 2合	Main Engine: LC6250ZLC-7*2
航速: 10.0节	Service Speed: 10.0knots



产品介绍  
Product Introduction

## CHEMICAL TANKER 化学品船



### 15500吨化学品船 15500DWT Chemical Tanker

总长: 145.00m	Length O.A.: 145.00m
型宽: 27.00m	Breadth MLD.: 27.00m
型深: 11.00m	Depth MLD.: 11.00m
设计吃水: 7.00m	Designed Draft: 7.00m
主机: 6S35MC7-C9	Main Engine: 6S35MC7-C9
航速: 13.0节	Service Speed: 13.0knots



### 3500吨化学品船 3500DWT Chemical Tanker

总长: 83.90m	Length O.A.: 83.90m
型宽: 18.00m	Breadth MLD.: 18.00m
型深: 5.50m	Depth MLD.: 5.50m
设计吃水: 4.30m	Designed Draft: 4.30m
航速: 10.0节	Service Speed: 10.0knots

## OIL TANKER 油船



### 13800吨成品油船 13800DWT Oil Tanker

总长: 139.75m	Length O.A.: 139.75m
型宽: 20.80m	Breadth MLD.: 20.80m
型深: 11.20m	Depth MLD.: 11.20m
设计吃水: 8.20m	Designed Draft: 8.20m
主机: 8G32	Main Engine: 8G32
航速: 12.0节	Service Speed: 12.0knots



### 9200吨成品油船 9200DWT Oil Tanker

总长: 145.00m	Length O.A.: 145.00m
型宽: 27.00m	Breadth MLD.: 27.00m
型深: 11.00m	Depth MLD.: 11.00m
设计吃水: 7.00m	Designed Draft: 7.00m
主机: 6S35MC7-C9	Main Engine: 6S35MC7-C9
航速: 13.0节	Service Speed: 13.0knots



### 7500吨成品油船 7500DWT Oil Tanker

总长: 119.80m	Length O.A.: 119.80m
型宽: 17.40m	Breadth MLD.: 17.40m
型深: 9.20m	Depth MLD.: 9.20m
设计吃水: 6.80m	Designed Draft: 6.80m
主机: 8320ZCd-8	Main Engine: 8320ZCd-8
航速: 11.0节	Service Speed: 11.0knots

## CONTAINER VESSEL 集装箱船

### 660箱集装箱船 660TEU Container Vessel

总长: 123.85m	Length O.A.: 123.85m
型宽: 20.80m	Breadth MLD.: 20.80m
型深: 10.00m	Depth MLD.: 10.00m
设计吃水: 6.50m	Designed Draft: 6.50m
主机: 6S30ME-B9	Main Engine: 6S30ME-B9
航速: 14.3节	Service Speed: 14.3knots



## FLOATING DOCK 浮船坞

### 举力13500吨浮船坞 13500T Lift Floating Dock

总长: 200.92m	Length O.A.: 200.92m
型宽: 43.50m	Breadth: 43.50m
下潜深度: 15.20m	Immersion Draft: 15.20m
举力: 13500T	Lifting Capacity: 13500T



## BARGE 驳船

### 5000吨油驳 5000DWT Oil Barge

总长: 81.60m	Length O.A.: 81.60m
型宽: 21.16m	Breadth MLD.: 21.16m
型深: 5.40m	Depth MLD.: 5.40m
设计吃水: 4.30m	Designed Draft: 4.30m



### 荷兰驳船 Cargo Barge

总长: 135.00m	Length O.A.: 135.00m
型宽: 11.45m	Breadth MLD.: 11.45m
型深: 5.32m	Depth MLD.: 5.32m



### LNG动力内河干散货船 LNG power inland dry bulk carriers

总长: 44.98m	Length O.A.: 44.98m
型宽: 8.80m	Breadth MLD.: 8.80m
型深: 3.25m	Depth MLD.: 3.25m
设计吃水: 2.90m	Designed Draft: 2.90m
主机: WP10C210-15NG	Main Engine: WP10C210-15NG
航速: 11.0节	Service Speed: 11.0knots



# SHIP BLOCKS

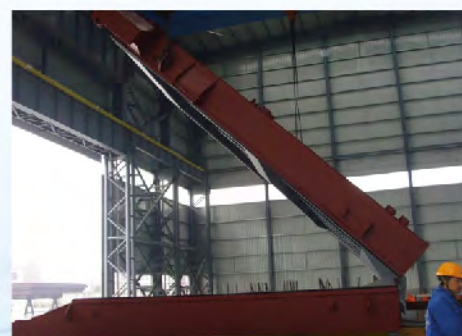
## 船舶分段

### 船舶舱口盖 HATCH COVER

公司致力于运用大型加工制作能力开拓大型装备制造。

主要业务有船舶分段、海工模块、港口机械及起重机械、桥梁及建筑钢结构、大型钢结构制造等。

Haitong also fabricates ship blocks, offshore module, port machinery and bridge steel structure.



产品介绍 Product Introduction

产品介绍 Product Introduction

# SHIP BLOCKS

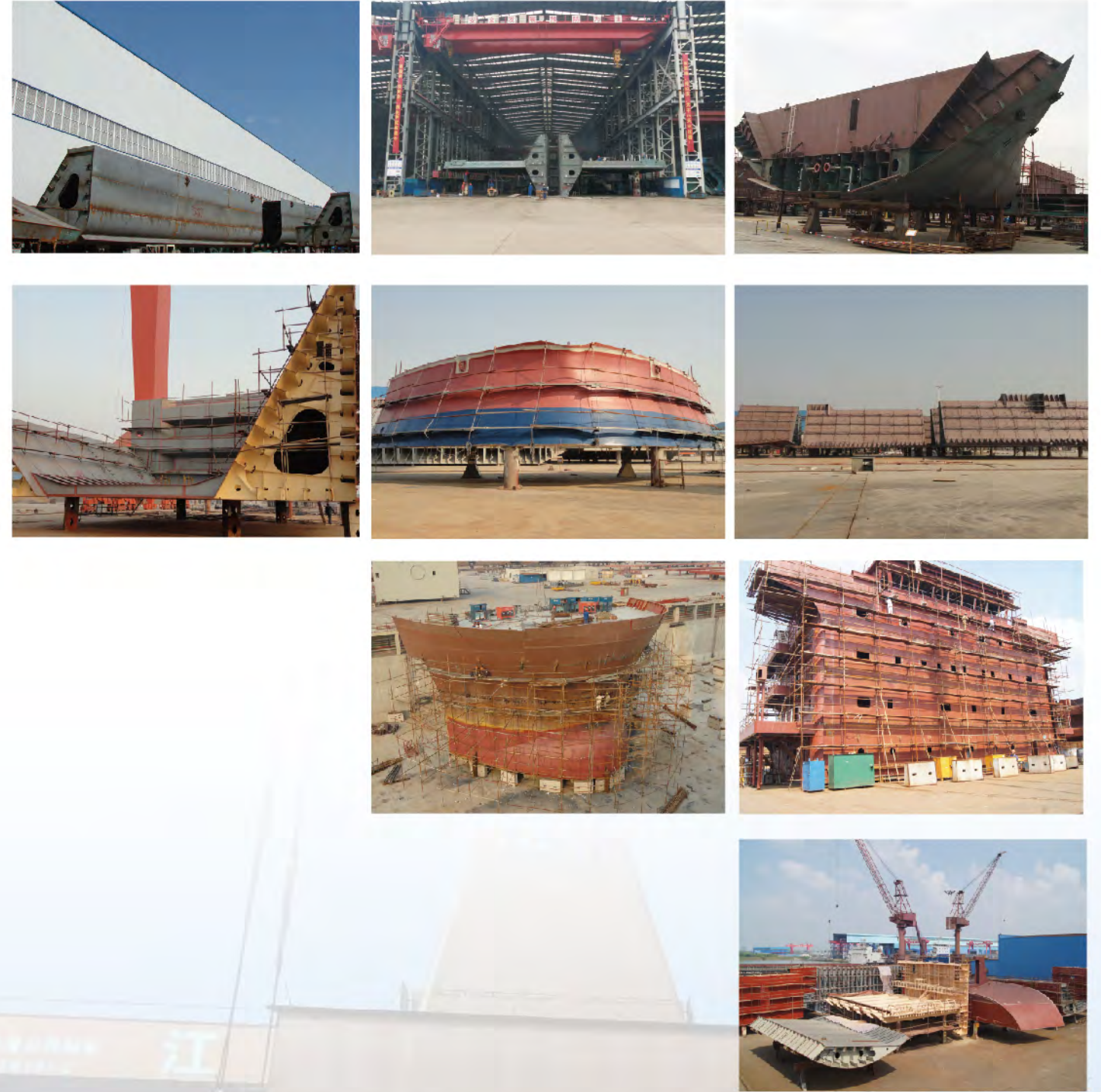
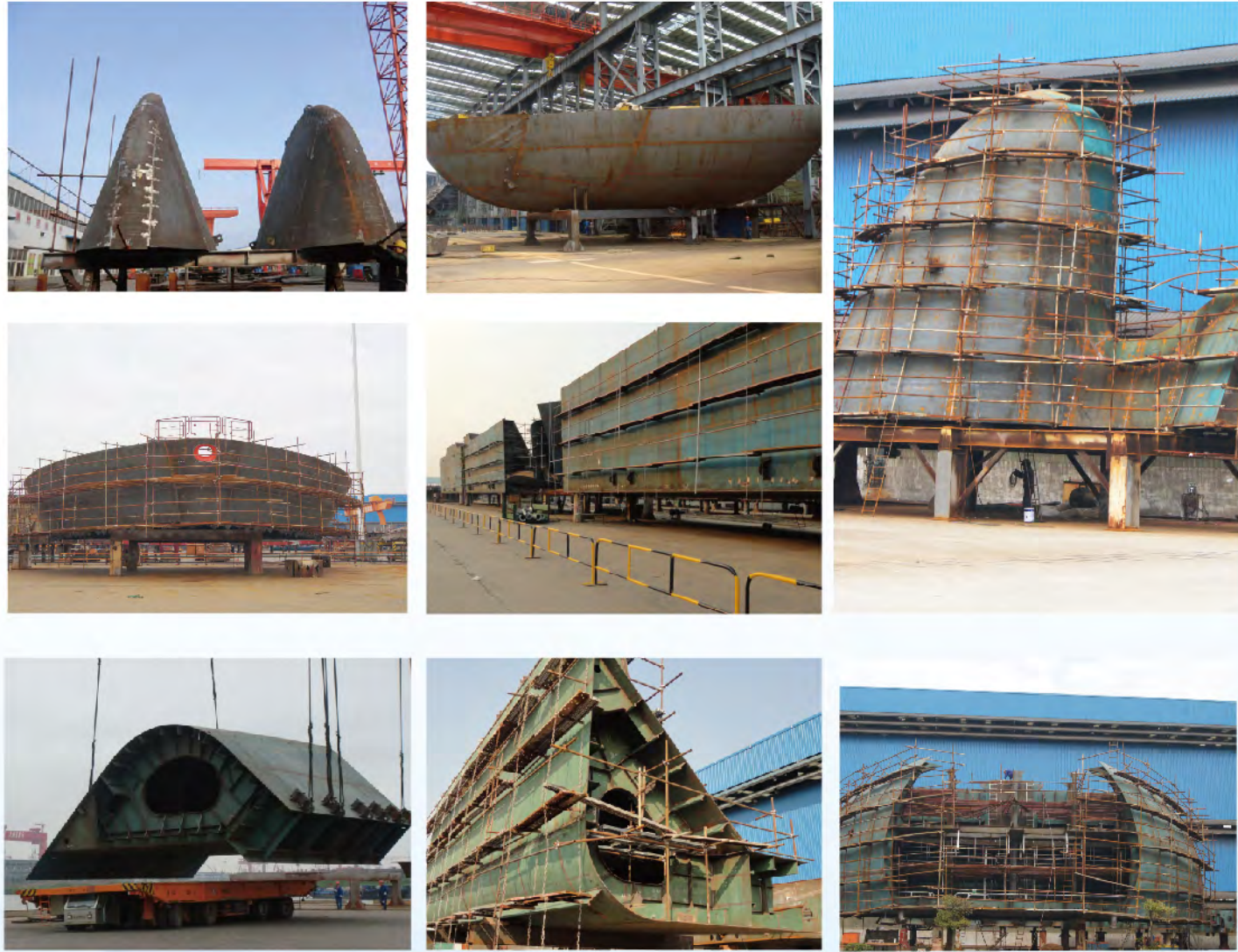
## 船舶分段

### 船舶分段 SHIP BLOCKS

公司致力于运用大型加工制作能力开拓大型装备制造。

主要业务有船舶分段、海工模块、港口机械及起重机械、桥梁及建筑钢结构、大型钢结构制造等。

Haitong also fabricates ship blocks, offshore module, port machinery and bridge steel structure.



产品介绍 Product Introduction

产品介绍 Product Introduction

# STEEL STRUCTURE

## 钢结构

### 建筑钢结构系列 BUILDING STEEL STRUCTURE SERIES

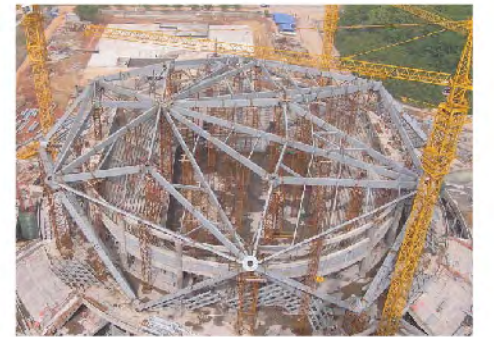
公司致力于运用大型加工制作能力开拓大型装备制造。

主要业务有船舶分段、海工模块、港口机械及起重机械、桥梁及建筑钢结构、大型钢结构制造等。

Haitong also fabricates ship blocks, offshore module, port machinery and bridge steel structure.



上海中心项目  
Shanghai central project



三亚新机场人工岛钢圆筒项目  
The steel cylinder project of Sanya new airport artificial island

